



Hammond Power Solutions

MONTERREY, MX GUELPH, ONT. BARABOO, WI COMPTON, CA

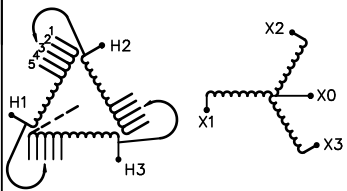


HPS EXPRESS™ L
TRANSFORMADOR TIPO SECO BARNIZADO
VARNISHED DRY TYPE TRANSFORMER

Modelo Part Number **EL1A0015MC**
No. de Serie Serial Number

AT/HV	480V 18.0A	Ref. de Cliente Customer Reference	
NBAI BIL	-	Fase Phase	3
TERM.	H1 H2 H3	Tipo TYPE	K
		Enfriamiento Cooling	ANN
		kVA	15
		Incremento de Temp. Temp. Rise	150 °C
		Clase de Temp. Temp. Class	220 °C
		Frecuencia Frequency	60 Hz
		Impedancia % Impedance % @ 170 °C	5.5
		Tipo de Gabinete Encl. Type	2
BT/LV	220Y/127V 39.4A	Masa Del Núcleo Y Devanados lbs/kg C&C Wt.	120/55
NBAI BIL	-	Masa Total Total Wt. lbs/kg	175/80
TERM.	X0 X1 X2 X3	Material de Conductores de Devanados Winding Material	AL

VOLTIOS VOLTS	CORRIENTE CURRENT AMPS	% VOLTAJE NOMINAL % RATED VOLTAGE	CONEXIÓN POR FASE CONNECTION
504	17.2	105	1
480	18.0	100	2
460	18.9	95.7	3
440	19.7	91.4	4
418	20.7	87.1	5



SPACINGS BETWEEN ANY VENTILATED ENCLOSURE PANEL AND ANY ADJACENT WALL SHALL BE A MINIMUM OF 3 INCHES

d00022.1sp

FABRICADO EN/MADE IN MÉXICO



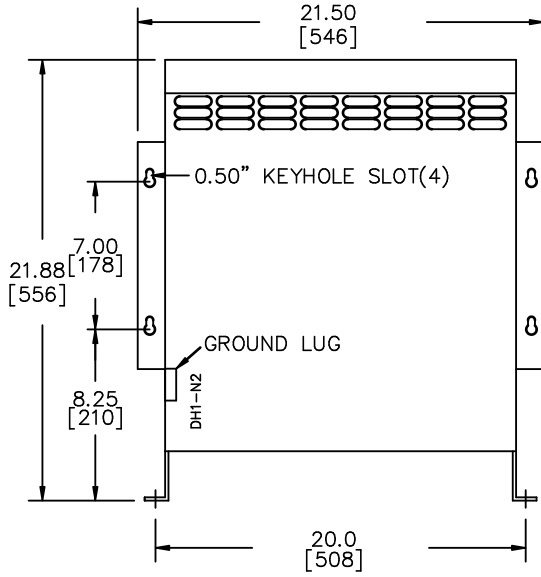
Hammond Power Solutions Inc.

TITLE: 3PH DISTRIBUTION TRANSFORMER NAMEPLATE INFORMATION			
			DES: PPICASSI
			DATE: 22/01/27
NO.	DATE	BY	REVISION
			SCALE: NTS

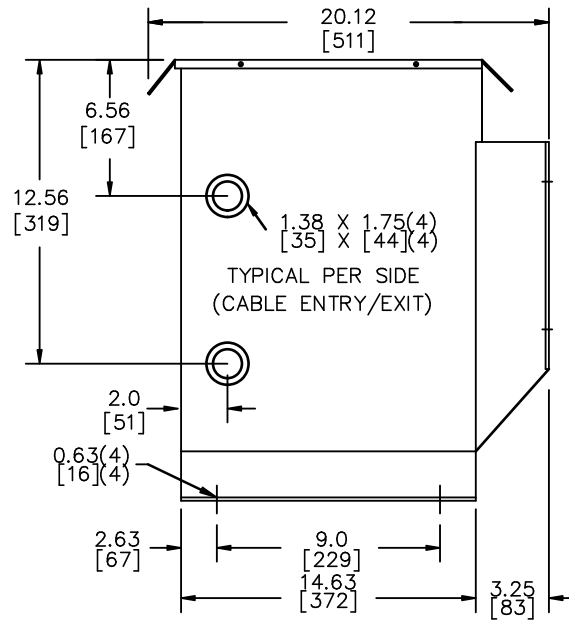
SHEET 1 OF 2
EDBELL1A0015MC

2022/01/27 09:29

FRONT VIEW



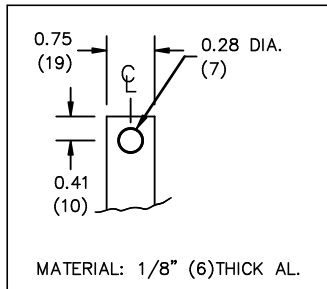
SIDE VIEW



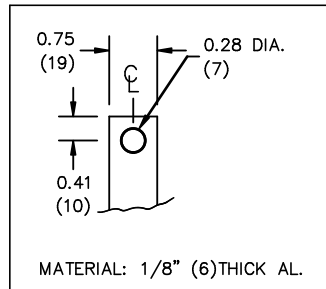
All Dimensions in inches[mm]

ENCLOSURE COLOR : ANSI-61 GREY PAINT OUTDOOR

HV TERMINAL DETAIL



LV TERMINAL DETAIL



CUSTOMER NOTES:

- HV TERMINATED AT TOP FRONT
- LV TERMINATED AT TOP FRONT



TITLE: 3PH DISTRIBUTION TRANSFORMER

DES:	PPICASSI
DATE:	22/01/27
SCALE:	NTS

SHEET 2 OF 2

EDBELL1A0015MC