



GE INDUSTRIAL MOTORS
a **WOLONG** company

Product Technical Information

September 26, 2022

Data shown is for the current revision model #. Ensure your nameplate model # matches.

Model Number:	5KS364DAJ6005D
Catalog Number:	V4417
Instruction Manual:	GEI-M1045
Connection Diagram:	GEM2034E-FIG9
Outline Drawing:	148CB36VMHKBCAA0001

Accessory Connection Diagrams

Bearing Thermocouple:	None	Heater:	3027JE-1C
RTD:	None	Thermistor:	None
Thermostat:	None	Winding Thermocouple:	None
Bearing RTD:	None		

Table of Contents

Specification	01
Performance Characteristics	02
Outline Drawing	03
Connection Drawing(s)	04
Spare parts	05

Marks:

MODEL NUMBER:	5KS364DAJ6005D	Estimated Weight:	800 Lbs
Outline Drawing:	148CB36VMHKBCAA0001	Time Rating:	CONT
Connection Diagram:	GEM2034E-FIG9	Enclosure:	WPI
Instruction Book:	GEI-M1045	Encl Construction:	OPEN
Design Code:	36BD1236AA	Ambient Max(°C):	40
Type:	KS	Alt Ambient Max(°C):	--
Frame:	L364TP16	Insulation Class:	H
Phases:	3	NEMA Design:	B
Poles:	4	Nominal Efficiency:	95.0 %
Output Power:	60HP 44.4KW	Guaranteed Efficiency:	94.100 %
RPM:	1785	3/4 Load Efficiency:	--
Voltage:	230/460	KVA Code:	G
Hertz:	60	Max KVAR:	22.3
Amps - FL:	146.8/73.4	Power Factor:	81.0
Service Factor:	1.15	Bearing - DE:	6212C3
Alt Service Factor:	--	Bearing - ODE:	235A2523AD01

Enclosure is Weather Protected One

Stamped Nameplate Notes:

NEMA ENCLOSURE WP-I, CSA ENCL DP
 HTR LDS HE1-HE2 115V 100W
 ROT CCW FACING ODE LEAD/PH SEQ 1-2-3/1-2-3
 INVERTER DUTY PER NEMA MG1 PART 31
 ALTERNATE RATING FOR PWM CONTROL:1.0SF 40C AMBIENT
 VAR TORQUE RANGE 5 -60 HZ
 UPPER BRG LUBE OIL: 3.7 QTS
 0 DEG C TO 40 DEG C : ISO 32(MINERAL OR SYNTHETIC)
 -15 DEG C TO 0 DEG C : ISO 32 SYNTHETIC
 SUITABLE FOR 50 HP, 190/380V, 50 HZ WITH
 146.4/73.2 AMPS AND 1485 RPM AT 1.00 SF;



Additional Information:

4P, VERT HOLLOW SHAFT HIGH THRUST (1D)
C/BOX 346 CU IN - 3.00" NPT
SPECIAL BALANCE
OIL RESISTANT SLEEVING ON LEADS
115V HTR LDS TO MAIN CONDUIT BOX
BEARING LIFE 8760 HRS AT 6244 LB THRUST
CG:15.23 IN FROM P-BASE FACE, STAT DEF:0.0033 IN
RCF:3300 CPM AT C/BOX SIDE, 3270 CPM AT
90 DEG FROM C/ BOX SIDE
NON-REVERSE BALL CARRIER,
BOLTED COUPLING, BX = 1.251, EW = 0.25
SPECIAL BALANCE;
COMMON FOR STD STOCK AS WELL AS FIRE PUMP



Performance Characteristics

1st Winding 1st Connection

Design: 36BD1236AA

Marks:

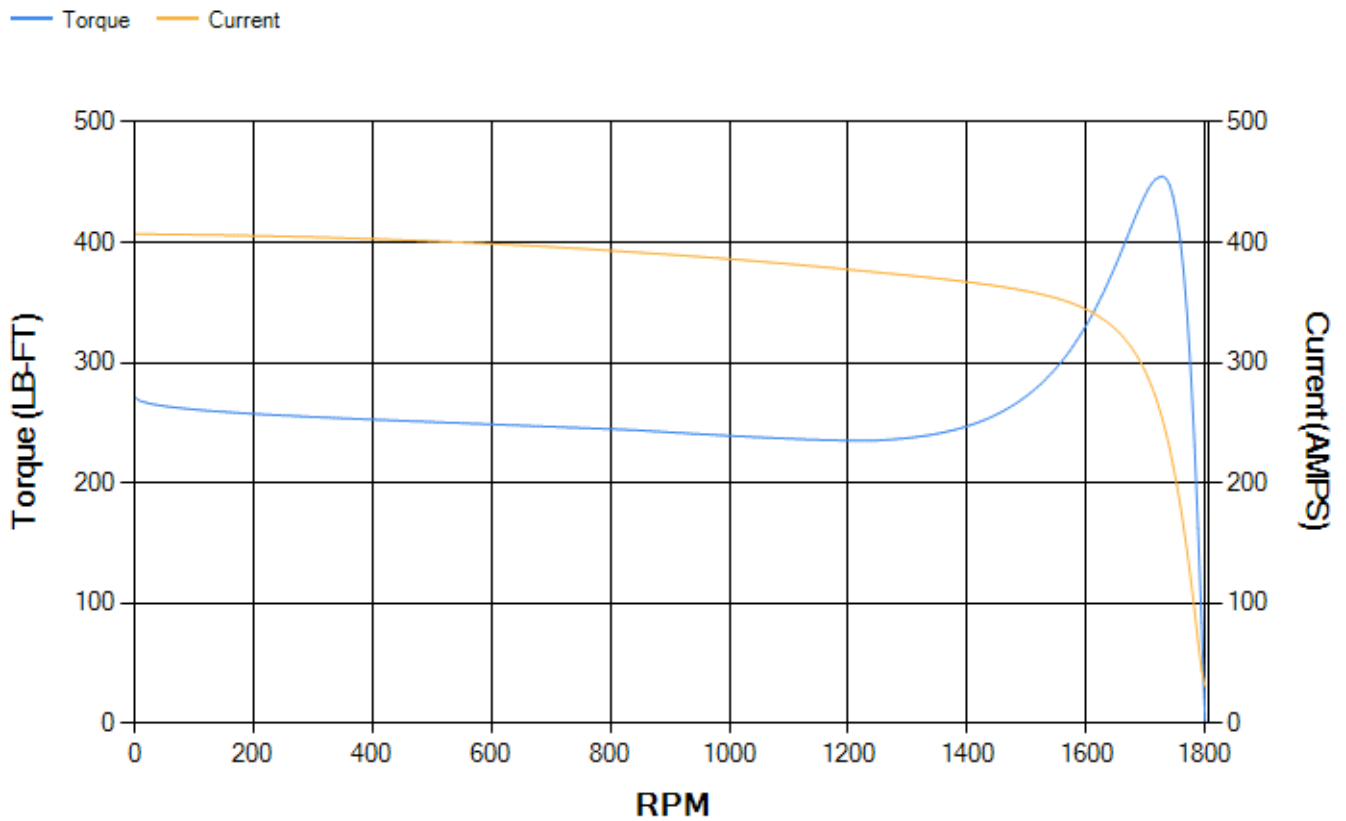
LOAD %	125.0	115.0	100.0	75.0	50.0	25.0	0.0
% EFF	94.1	94.29	94.69	94.53	93.81	90.35	0.00
% PF	83.31	82.68	81.16	76.27	65.76	43.46	4.06
AMPS	89.54	82.84	72.88	58.41	45.52	35.75	31.07

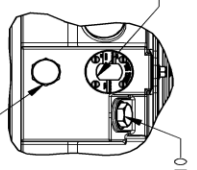
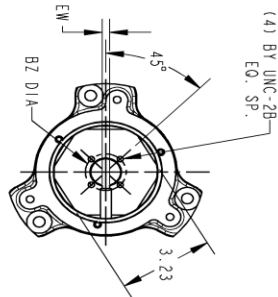
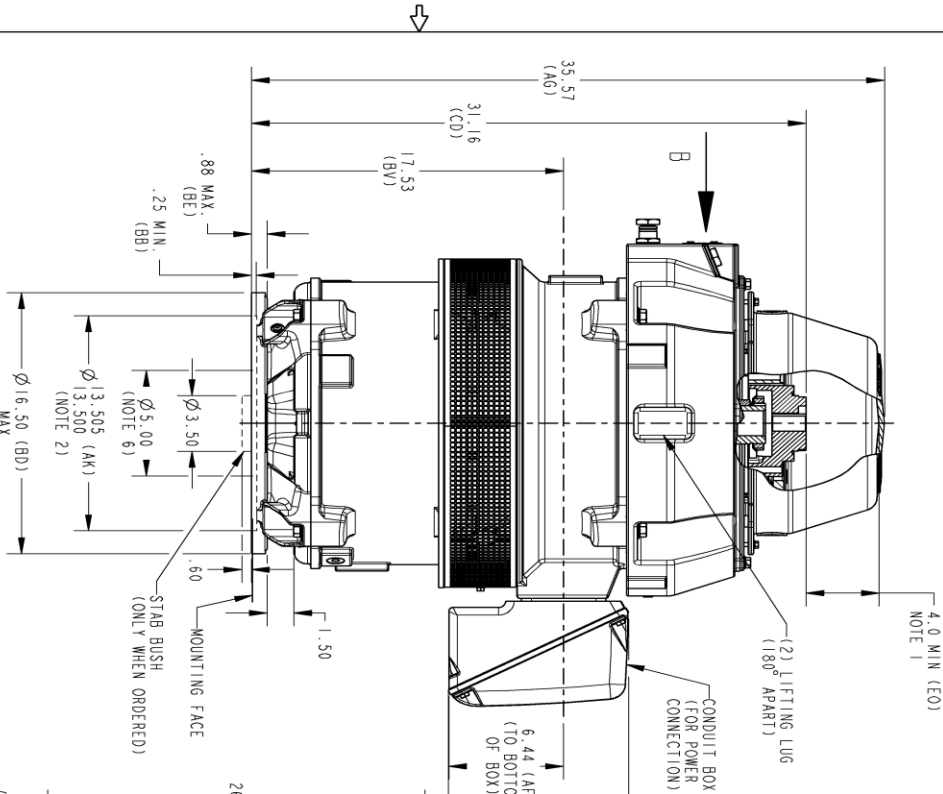
TORQ(FL)#FT	176.61	TORQ(LR)%FL	153.89	TORQ(BD)%FL	256.82
AMPS(LR)	406.96	PF AT START	0.3		

This motor is capable of two cold or one hot start with a maximum connected load inertia of 1534 Lb-Ft Sq (64.58 Kg-meter Sq)at 100% voltage, where the load torque varies with the square of the speed. Acceleration time with maximum inertia and the above load type is 44 seconds. Safe stall time at 100% voltage is 74 seconds cold, 54 seconds hot. Rotor inertia is 11.09 Lb-Ft Sq (0.47 Kg-meter Sq).

Open Circuit A-C:	0.641	Short Circuit D-C:	0.026
Short Circuit A-C:	0.041	X/R Ratio:	9.689
Stator Slots:	60	Rotor Slots:	50

Speed Torque Current Curve (First Connection, First Speed)





- NOTES:
1. THE TOTAL HEIGHT OF THE PUMP SHAFT AND LOCKING NUT IS ABOVE THE COUPLING MUST NOT EXCEED THIS DIMENSION.
 2. TOLERANCE ON FACE ROUNDOFF AND PERMISSIBLE ECCENTRICITY OF MOUNTING RABBIT ARE .001, 1.1R
 3. CENTRE OF MOUNTING BOLTS HOLES WITHIN 0.025 OF ANGULAR & DIAMETRICAL LOCATION WITHIN REFERENCE TO THE CENTRAL LINE OF MOUNTING RABBIT.
 4. PROVIDED MOUNTING CONDITIONS PERMIT, CONDUIT BOX MAY BE TURNED SO THAT ENTRANCE CAN BE MADE UPWARD, DOWNWARD OR FROM EITHER SIDE.
 5. FOR ESTIMATING ONLY UNLESS ENDORSED FOR CONSTRUCTION.
 6. MAINTAIN MINIMUM CLEARANCE FOR SHAFT SLINGER.

VIEW A

THIRD ANGLE PROJECTION

COUPLING DIMENSIONS

BX	BY	BZ	KEY WAY			
			EM	R	XM	
1.502-1.501	2.125	0.315	1.619/1.669	.562		
1.439-1.438	2.125	0.315	1.615/1.605	.562		
1.292-1.291	1/4-20	0.315	1.425/1.415	.562		
1.252-1.251						
1.189-1.188	1.750	0.250	1.377/1.367	.438		
1.002-1.001	#10-32	1.315	1.314/1.304	.438		

DIMENSIONS IN INCHES
NEMA TYPE P BASE

GE INDUSTRIAL MOTORS
A WOLONG company

OUTLINE, WPI
NEMA 364/365 HOLLOW SHAFT, HIGH THRUST
6550 BD, 346 CL IN C/BOX

SIGNATURES DATE

MODEL	SINETHA 03/09/2016	TITLE	
DETAIL	SINETHA 03/09/2016	DESIGNED	RAJHU 03/09/2016
CHKD	RAJHU 03/09/2016	ISSUED	RAJHU 03/09/2016
DATE	03/09/2016	SCALE	0.120

REVISIONS

REV.	DESCRIPTION	DATE	APPROVED
1	ISAC #17-0691	09/11/2017	RAJHU
2	ISAC #18-0869	02/06/19	PRASHANTH

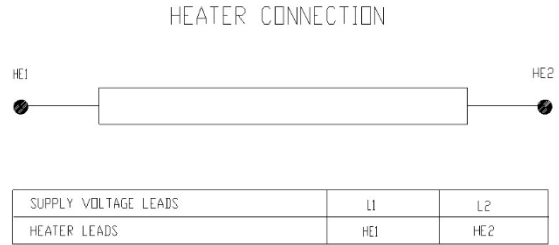
148CB36VMHKBCA0001 002

Marks:

Connection Diagram
GEM2034E-FIG9



Heater Connection
3027JE-1C



End shield Assembly		
Part Description	DE Side Part#	ODE Side Part#
End Shield	115E7255AA1	115E7259LK-G01
Bearing	235A2509BE01	235A2523AD01
Slinger/Inproseal	235A2300FM1	

Fan & Fan Cover Assembly	
Part Description	Part#
Fan	
Fan Cover	161C1053AA1

Conduit & Accessories Box Assembly	
Part Description	Part#
Conduit Box	149C4429AA2

Mechanical Accessories	
Part Description	Part#
Brake	
Tachometer	

