



GE INDUSTRIAL MOTORS
a **WOLONG** company

Product Technical Information

July 15, 2020

Data shown is for the current revision model #. Ensure your nameplate model # matches.

Model Number:	5KS444DAJ6020D1
Catalog Number:	V4427
Instruction Manual:	GEI-M1045
Connection Diagram:	GEM2034E-FIG19
Outline Drawing:	148CB44VMHKCCAA0001

Accessory Connection Diagrams

Bearing Thermocouple:	None	Heater:	3027JE-1C
RTD:	None	Thermistor:	None
Thermostat:	None	Winding Thermocouple:	None
Bearing RTD:	None		

Table of Contents

Specification	01
Performance Characteristics	02
Outline Drawing	03
Connection Drawing(s)	04
Spare parts	05

Marks:

MODEL NUMBER:	5KS444DAJ6020D1	Estimated Weight:	2390 Lbs
Outline Drawing:	148CB44VMHKCCAA0001	Time Rating:	CONT
Connection Diagram:	GEM2034E-FIG19	Enclosure:	WPI
Instruction Book:	GEI-M1045	Encl Construction:	OPEN
Design Code:	44BD1167D	Ambient Max(°C):	40
Type:	KS	Alt Ambient Max(°C):	--
Frame:	L444TP16	Insulation Class:	H
Phases:	3	NEMA Design:	B
Poles:	4	Nominal Efficiency:	95.8 %
Output Power:	200HP 148KW	Guaranteed Efficiency:	95.0 %
RPM:	1780	3/4 Load Efficiency:	95.2 %
Voltage:	460	KVA Code:	G
Hertz:	60	Max KVAR:	57.8
Amps - FL:	230.0	Power Factor:	85.5
Service Factor:	1.15	Bearing - DE:	6217C3
Alt Service Factor:	--	Bearing - ODE:	235A2536AB01

Enclosure is Weather Protected One

Stamped Nameplate Notes:

NEMA ENCLOSURE WP-I, CSA ENCL DP
 HTR LDS HE1-HE2 115V 145W
 ROT CCW FACING ODE LEAD/PH SEQ 1-2-3/1-2-3
 INVERTER DUTY PER NEMA MG1 PART 31
 ALTERNATE RATING FOR PWM CONTROL:1.0SF 40C AMBIENT
 VAR TORQUE RANGE 5 -60 HZ
 UPPER BRG LUBE OIL: 10.2 QTS
 0 DEG C TO 40 DEG C : ISO 32(MINERAL OR SYNTHETIC)
 -15 DEG C TO 0 DEG C : ISO 32 SYNTHETIC
 SUITABLE FOR 150 HP, 380V, 50 HZ WITH
 210.0 AMPS AND 1485 RPM AT 1.0 SF



Additional Information:

4P, VERT HOLLOW SHAFT HIGH THRUST (2D)
C/BOX 700 CU IN - 3.00" NPT
OIL RESISTANT SLEEVING ON LEADS
115V HTR LDS TO MAIN CONDUIT BOX
BEARING LIFE 8760 HRS AT 22550 LB THRUST
PART WINDING START
CG:22.60 IN FROM P-BASE FACE, STAT DEF:= 0.005 IN
RCF: 2689 CPM
NON-REVERSE BALL CARRIER,
BOLTED COUPLING, BX = 1.688", KEY =.375"
COMMON FOR STD STOCK AS WELL AS FIRE PUMP



Performance Characteristics

1st Winding 1st Connection

Design: 44BD1167D

Marks:

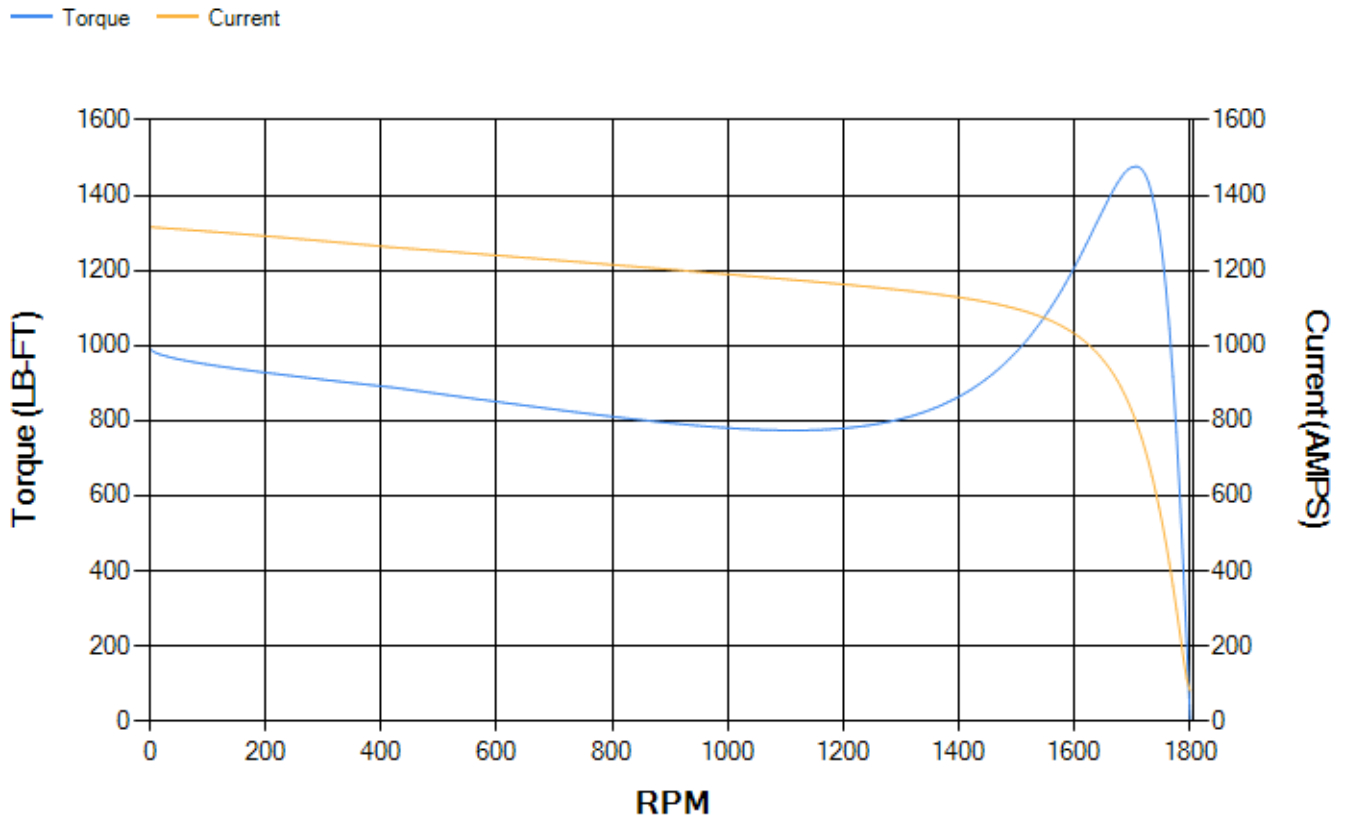
LOAD %	125.0	115.0	100.0	75.0	50.0	25.0	0.0
% EFF	94.49	94.71	95.18	95.16	94.7	91.98	0.00
% PF	86.56	86.3	85.44	82.06	73.6	51.92	4.37
AMPS	286.07	263.37	230.21	179.79	134.28	97.99	80.73

TORQ(FL)#FT	589.56	TORQ(LR)%FL	168.53	TORQ(BD)%FL	250.07
AMPS(LR)	1315.55	PF AT START	0.32		

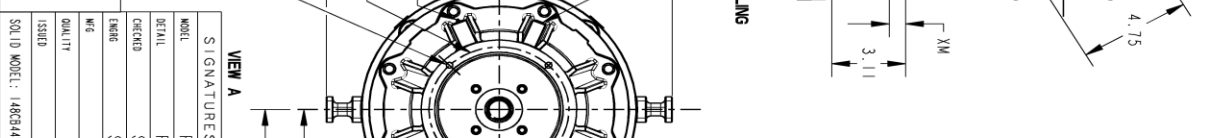
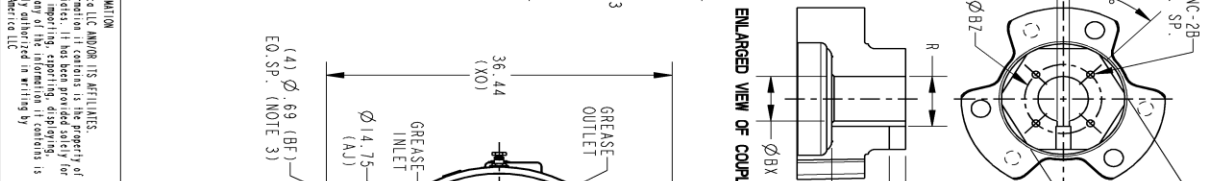
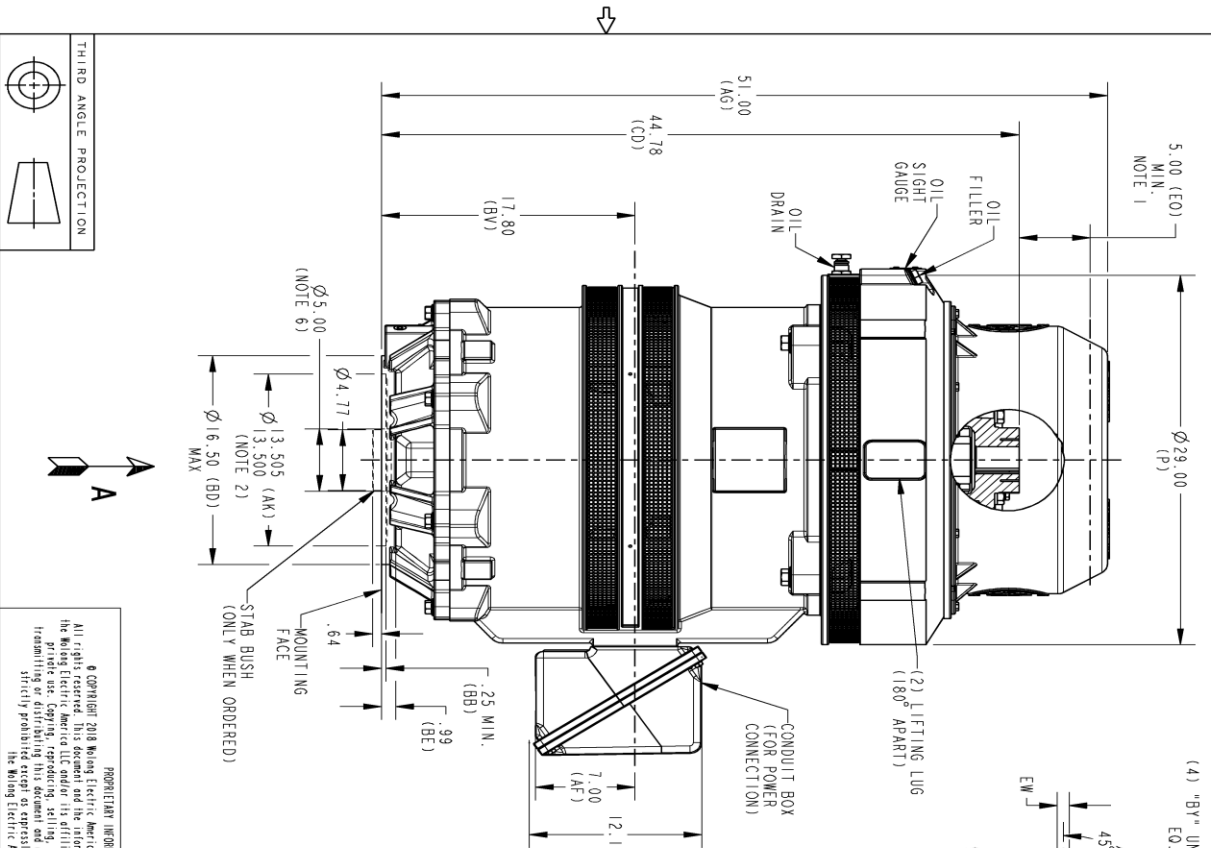
This motor is capable of two cold or one hot start with a maximum connected load inertia of 2316 Lb-Ft Sq (97.5 Kg-meter Sq)at 100% voltage, where the load torque varies with the square of the speed. Acceleration time with maximum inertia and the above load type is 19 seconds. Safe stall time at 100% voltage is 41 seconds cold, 23 seconds hot. Rotor inertia is 54.22 Lb-Ft Sq (2.28 Kg-meter Sq).

Open Circuit A-C:	0.697	Short Circuit D-C:	0.029
Short Circuit A-C:	0.039	X/R Ratio:	10.767
Stator Slots:	72	Rotor Slots:	58

Speed Torque Current Curve (First Connection, First Speed)



Marks:



REV.	DESCRIPTION	DATE	APPROVED
1	ISAC#19-0070	01/30/19	DHEERAJ

REVISIONS			
REV.	DESCRIPTION	DATE	APPROVED
1	ISAC#19-0070	01/30/19	DHEERAJ

NOTES:

- THE TOTAL HEIGHT OF PUMP SHAFT AND LOCKING NUT ABOVE COUPLING MUST NOT EXCEED THIS DIMENSION.
- TOLERANCE ON FACE ROUNDOFF AND PERMISSIBLE ECCENTRICITY OF MOUNTING RABBET ARE .007 T.1.R
- CENTRE OF MOUNTING BOLTS HOLES WITHIN 0.025 OF ANGULAR & DIAMETRICAL LOCATION WITHIN REFERENCE TO THE CENTRILINE OF MOUNTING RABBET.
- PROVIDED MONTING CONDITIONS PERMIT, CONDUIT BOX MAY BE TURNED SO THAT ENTRANCE CAN BE MADE UPWARD, DOWNWARD OR FROM EITHER SIDE.
- FOR ESTIMATING ONLY UNLESS ENDORSED FOR CONSTRUCTION.
- MAINTAIN MINIMUM CLEARANCE FOR SHAFT SLINGER.

DIMENSIONS IN INCHES					
NEMA TYPE P BASE					
COUPLING DIMENSIONS					
BX	BY	BZ	KEY WAY		
	EW	R	XW		
1.501	1/4-20	2.125	.375	1.559	.562
1.588	1/4-20	2.500	.375	1.559	.562
1.751	1/4-20	2.500	.375	1.922	.562
1.813	1/4-20	2.500	.500	2.033	.688
1.938	1/4-20	2.500	.500	2.160	.688
2.001	3/8-16	3.250	.500	2.223	.688
2.063	3/8-16	3.250	.500	2.287	.688
2.126	3/8-16	3.250	.500	2.350	.688
2.188	3/8-16	3.250	.500	2.414	.688
2.251	3/8-16	3.250	.500	2.477	.688
2.316	3/8-16	3.250	.500	2.550	.688
2.438	3/8-16	3.250	.625	2.715	.812
2.501	3/8-16	3.250	.625	2.777	.812

PROHIBITARY INFORMATION

All rights reserved. This document and its information is the property of the GE Industrial Motors LLC and its affiliates. It has been provided solely for the personal use of the individual user and is not to be reproduced, stored in a retrieval system, or distributed in any form or by any means, electronic, mechanical, photocopying, recording, or by any information storage and retrieval system, without the prior written permission of GE Industrial Motors LLC.

PROHIBITARY INFORMATION

Copyright 2018 GE Industrial Motors LLC AND/OR ITS AFFILIATES. All rights reserved. This document and its information is the property of GE Industrial Motors LLC and its affiliates. It has been provided solely for the personal use of the individual user and is not to be reproduced, stored in a retrieval system, or distributed in any form or by any means, electronic, mechanical, photocopying, recording, or by any information storage and retrieval system, without the prior written permission of GE Industrial Motors LLC.

PROHIBITARY INFORMATION

Copyright 2018 GE Industrial Motors LLC AND/OR ITS AFFILIATES. All rights reserved. This document and its information is the property of GE Industrial Motors LLC and its affiliates. It has been provided solely for the personal use of the individual user and is not to be reproduced, stored in a retrieval system, or distributed in any form or by any means, electronic, mechanical, photocopying, recording, or by any information storage and retrieval system, without the prior written permission of GE Industrial Motors LLC.

PROHIBITARY INFORMATION

Copyright 2018 GE Industrial Motors LLC AND/OR ITS AFFILIATES. All rights reserved. This document and its information is the property of GE Industrial Motors LLC and its affiliates. It has been provided solely for the personal use of the individual user and is not to be reproduced, stored in a retrieval system, or distributed in any form or by any means, electronic, mechanical, photocopying, recording, or by any information storage and retrieval system, without the prior written permission of GE Industrial Motors LLC.

PROHIBITARY INFORMATION

Copyright 2018 GE Industrial Motors LLC AND/OR ITS AFFILIATES. All rights reserved. This document and its information is the property of GE Industrial Motors LLC and its affiliates. It has been provided solely for the personal use of the individual user and is not to be reproduced, stored in a retrieval system, or distributed in any form or by any means, electronic, mechanical, photocopying, recording, or by any information storage and retrieval system, without the prior written permission of GE Industrial Motors LLC.

PROHIBITARY INFORMATION

Copyright 2018 GE Industrial Motors LLC AND/OR ITS AFFILIATES. All rights reserved. This document and its information is the property of GE Industrial Motors LLC and its affiliates. It has been provided solely for the personal use of the individual user and is not to be reproduced, stored in a retrieval system, or distributed in any form or by any means, electronic, mechanical, photocopying, recording, or by any information storage and retrieval system, without the prior written permission of GE Industrial Motors LLC.

SIGNATURES	DATE
RAVI	07/01/18
RAVI	07/01/18
SASI	07/01/18
SASI	07/01/18
ENG	
DWG	
ISSUED	
SOLID MODEL: 148CB44VMHKCCAA0001	

TITLE	
OUTLINE, NEMA WPI 444/445	
VERTICAL HOLLOW SHAFT, HIGH THRUST GRS LOWER	
16.5 BD, 700 CU IN C/BXD	

SCALE:	REF. NO.:	SHEET NO.:
0.120		1

Marks:

Connection Diagram
GEM2034E-FIG19



Heater Connection
3027JE-1C



End shield Assembly		
Part Description	DE Side Part#	ODE Side Part#
End Shield	115E7660AA1	115E7670LM1
Bearing	235A2522AJ01	235A2536AB01
Slinger/Inproseal	149C4399G06	

Fan & Fan Cover Assembly	
Part Description	Part#
Fan	
Fan Cover	161C1050AA1

Conduit & Accessories Box Assembly	
Part Description	Part#
Conduit Box	118D4408AD2

Mechanical Accessories	
Part Description	Part#
Brake	
Tachometer	

