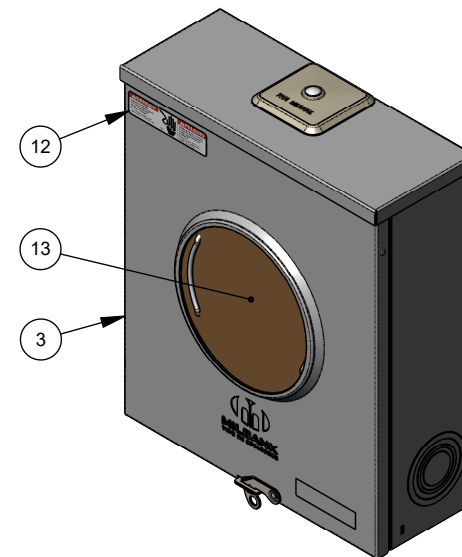
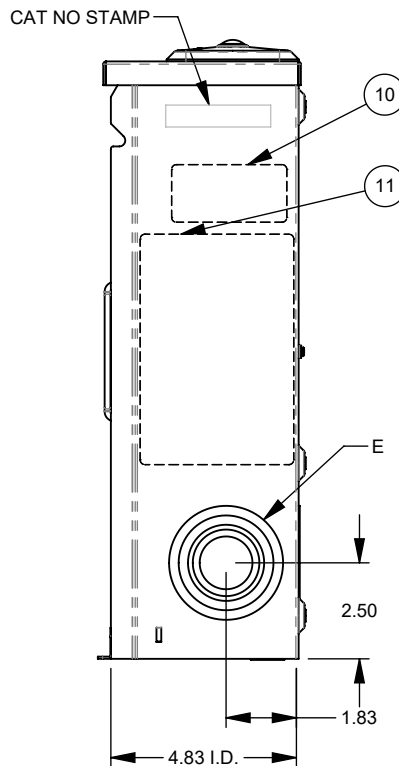
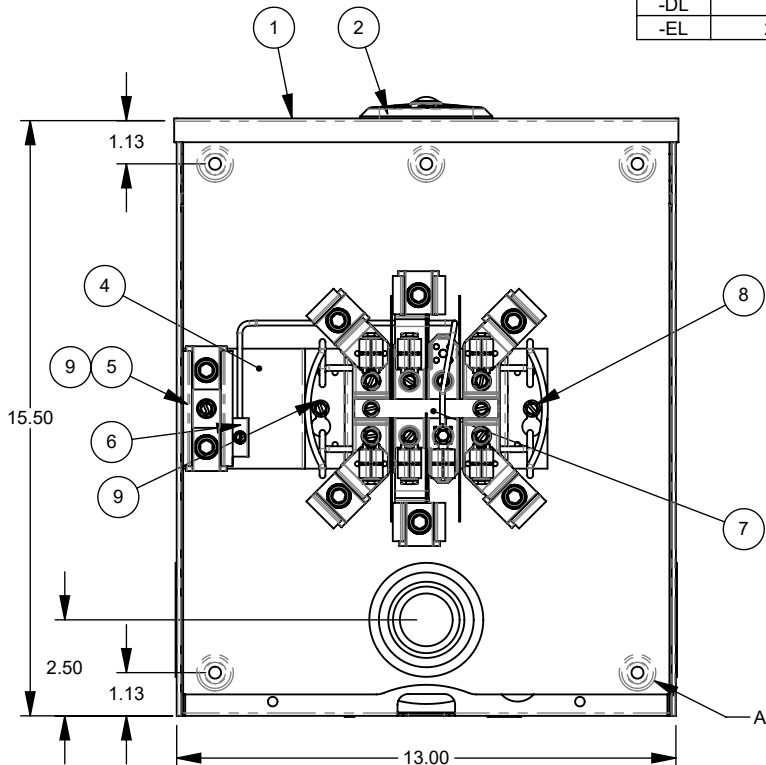


SUFFIX	SMALL HUB TYPE	HUB / SCREWS
-O	NO OPENING	NONE
-RL	HUB OPENING	
-XL	CLOSING PLATE (A7551)	1179582
-WL	1" (A7514)	1028195 / 1005200 (4)
-YL	1 1/4" (A7515)	1000006 / 1005200 (4)
-ZL	1 1/2" (A7516)	1003422 / 1005200 (4)
-DL	2" (A7517)	1000007 / 1005200 (4)
-EL	2 1/2" (A7518)	1028196 / 1005200 (4)

ITEM	QTY.	PART NUMBER	DESCRIPTION
1	1	1129418	SHELL WELDMENT
2	1	(SEE CHART)	UNIT HUB
3	1	1128236	FRONT ASSEMBLY
4	1	1193436	RISER
5	1	1026896	350 kcmil GRND. CONN. ASSY
6	1	1000394	TRIPLEX/QUADPLEX GND. ASS'Y
7	1	(SEE CHART)	ASY BLK 200A 7T & PAINTED BRIDGE
8	1	1000183	SCREW 12-24 x 5/16
9	2	1000193	SCREW, 12-24 x 3/8
10	1	1172377	LABEL 1.5" X 3" USA
11	1	1178654	RATING LABEL
12	1	1000064	LABEL, DANGER
13	1	1000158	PAD WIREMAN, 8.37 x 7.50
14	1	1005214	CARTON (NOT SHOWN)



SEE SHEET 2 FOR CUSTOMER DRAWING

ITEM	QTY	FEATURE TABLE DESCRIPTION
A	6	UL MOUNTING EMBOSS
B	1	.25, .50 CONC. K.O.
C	1	Ø .250 SOLID K.O.
D	3	1.25, 1.50, 2.00, 2.50, 3.00 CONC. K.O.
E	3	1.00, 1.25, 1.50, 2.00, 2.50 CONC. K.O.

NOTES:

- BRIDGE, STRAP, AND RISER SHOULD ALL BE PAINTED.
- GROUND WIRE MUST GO UNDER THE TOP BLOCK CONNECTOR.

Material:	16 GA. GALV. STEEL	
Shear/Die No.:		
Finish:	MILBANK LIGHT GRAY	
Part Wt.:		LBS. EA.
Square Inches:		
Tolerances:	Third Angle	
Unless Specified Otherwise		
X.X	±.1	
X.XX	±.03	
X.XXX	±.015	
X"	±2"	
Scale:	NTS	Checked By:
Drawn By:	DL	Approved By:

SUFFIX	BLOCK ASSY
NONE	1201753
-CFEN	1193378



Title: 200A RINGLESS 7 TERM 350 kcmil METER SOCKET

Catalog No.: S6253-(-)(-)

Customer: CFEN MEXICO

Drawing No.: 6253

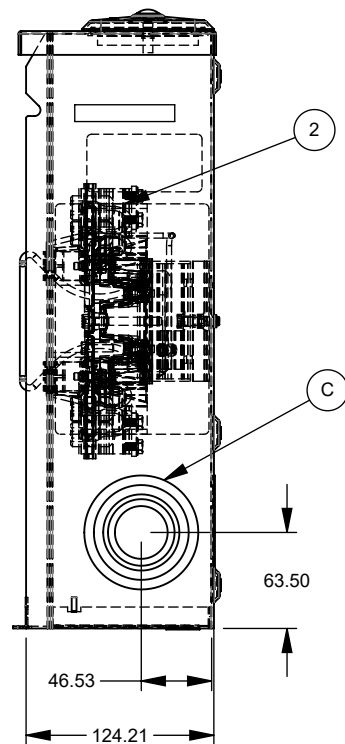
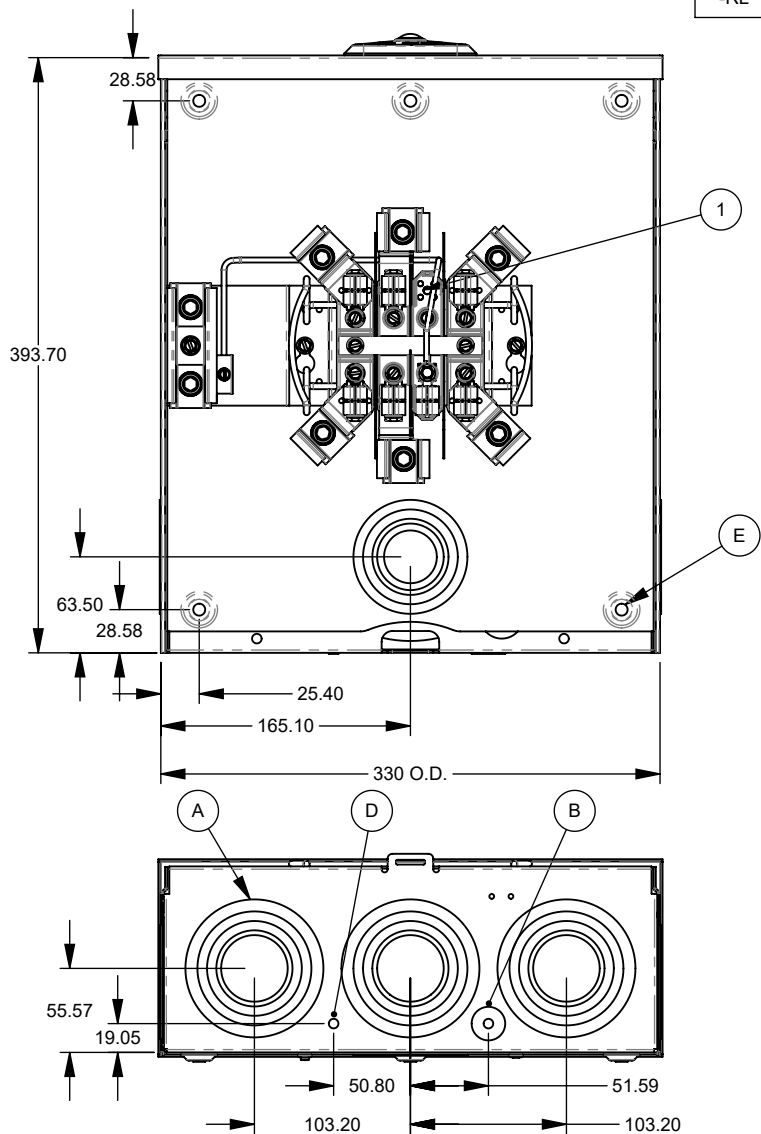
Date: 04/28/17 Sheet: 1 of 2

REV.	DATE	DESCRIPTION	ECO No.	BY
F1	03-01-18	REVISE ITEM #8 DESCRIPTION	038394	BMH
F2	5/23/18	CHARTED -CFEN	038913	KSP
G	09/10/20	ADDED NOTE #2; SEPARATED WELDMENT TO OWN DRAWING; 1005214 WAS 1000167;	046330	BLY

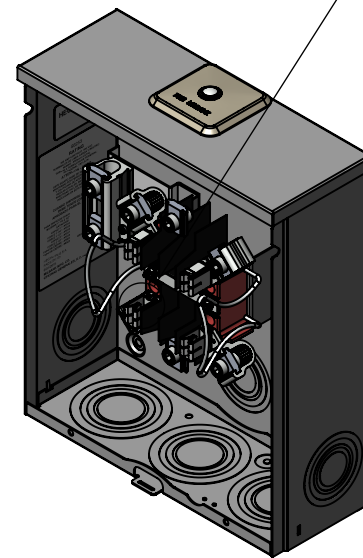
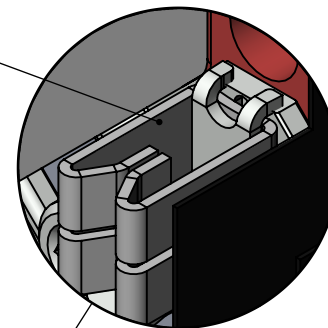
ART.	CANT.	OPCION
A	3	1.25, 1.50, 2.00, 2.50, 3.00, CONC. K.O.
B	1	.25, .50 CONC. K.O.
C	3	1.00, 1.25, 1.50, 2.00, 2.50 CONC. K.O.
D	1	.25 SOLIDO K.O.
E	6	U/L ORIFICIO DE MONTAJE


ORIFICIOS PEQUENOS		
SUFIJO	ADAPTADOR	ADAP. UNI.
-O	TAPADERA	#NINGUNO
-WL	1"	#ORIFICIO W
-YL	1.25"	#ORIFICIO Y
-ZL	1.5"	#ORIFICIO Z
-DL	2"	#ORIFICIO D
-EL	2.5"	#ORIFICIO E
-XL	PLACA DE CIERRE	#1179582
-RL	ORIFICIO DE ENTRADA	#NINGUNO

ART.	CANT.	NUMERO DE PARTE	DESCRIPCION
1	1	1193378	BLOQUEO Y PUENTE ENSAMBLADO 200A 7T
2	1	1175800	RATING ETIQUETA



CLIP DE REFUERZO  
INTERIOR RESISTENTE  
AL CORROSION



Material:	16 GA. GALV. STEEL	 <p><b>MILBANK</b> ENERGY AT WORK KANSAS CITY, MO USA</p>	
Shear/Die No.:			
Finish:	MILBANK LIGHT GRAY	<p>Title: 200A RINGLESS 7 TERM 350 kcmil METER SOCKET</p>	
Part Wt.:	LBS. EA.		
Square Inches:		Catalog No.:	S6253-(-)-()
Tolerances: Unless Specified Otherwise X.X ±.1 X.XX ±.03 X.XXX ±.015 X" ±2"	Third Angle	Customer:	CFEN MEXICO
Scale:	NTS	Checked By:	
Drawn By:	DL	Approved By:	
Date:	04/28/17	Sheet:	2 of 2

REV.	DATE	DESCRIPTION	ECO No.	BY
F1	03-01-18	REVISE ITEM #8 DESCRIPTION	038394	BMH
F2	5/23/18	CHARTED -CFEN	038913	KSP
G	09/10/20	ADDED NOTE #2; SEPARATED WELDMENT TO OWN DRAWING; 1005214 WAS 1000167;	046330	BLY