

ITEM	QTY.	PART NUMBER	DESCRIPTION
1	1	(SEE CHART)	SHELL WELDMENT
2	1	(SEE CHART)	HUB UNIT AS SPECIFIED
3	1	(SEE CHART)	BRIDGE & BLOCK ASSY
4	1	(SEE CHART)	FRONT ASSEMBLY
5	2	1000193	SCREW, 12-24 x 3/8
6	1	1000064	LABEL, DANGER
7	S/C	1128667	CPSB LABEL
8	S/C	1135425	CATALOG LABEL
9	1	1000072	RATING LABEL
10	S/C	1000166	LABEL, UL METER SOCKET
11	1	1000158	PAD WIREMAN, 8.37 x 7.50
12	1	1005229	CARTON (NOT SHOWN)
13	0.25	1000185	CARTON 4-PER (MULTI PACK)(NOT SHOWN)

ITEM	QTY.	DESCRIPTION
A	4	1, 1.25, 1.5, 2, 2.5 CONC. K.O.
B	1	.25, .50 CONC. K.O.
C	1	.25 SOLID K.O.
D	6	U/L MOUNTING EMBOSS

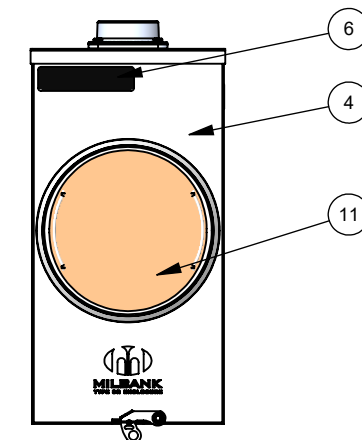
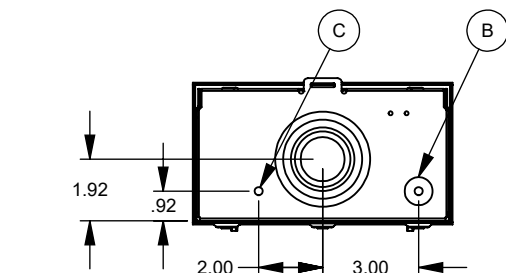
**FACTORY NOTES:**

- WHEN SOLD W/ "R" PREFIX, UNIT TO BE SINGLE PACKED IN CARTON #1005229. APPLY CARTON LABEL FROM LIST BELOW TO MIDDLE OF THE CARTON SIDE PANEL.  
 R7021-DL-TG: #1130570  
 R7021-DL-KK-CPSB: #1131018  
 R7021-RL-QG-KK: #1130742  
 R7021-RL-TG: #1130572  
 R7021-RL-TG-KK: #1130579  
 R7021-RL-TG-KK-RGE: #1130573  
 R7021-RL-KK-DLC: #1131227  
 R7021-DL-TG-PEC: #1168721
- SEE DWG. #1096668 FOR LABEL LOCATION REFERENCE.

**SALES NOTES:**

- FOR FIELD INSTALLED 5TH TERMINAL KIT ORDER CAT. #K5T.
- FOR SPANISH VERSION SEE DWG. 7021-31.


**SEE SHEET 2 FOR CHARTS & SHELL WELDMENT DETAIL  
 SEE SHEET 3 FOR CUSTOMER NOTES**



CATALOG NUMBER PREFIX		
PREFIX	DESCRIPTION	1000166 QTY.
S	16 GA. STEEL PAINTED SHELL, NON-U/L LABELING	0
U	16 GA. STEEL PAINTED SHELL, U/L LABELING	1
AP	.064 ALUM. PINATED SHELL NON U/L LABELING	0
UA	.064 ALUM. UN-PAINTED SHELL U/L LABELING	1
UAP	.064 ALUM. PAINTED SHELL U/L LABELING	1
R	16 GA. STEEL PAINTED SHELL, U/L LABELING, SINGLE PACKED (RETAIL)	1
RAP	.064 ALUM. PAINTED SHELL U/L LABELING, SINGLE PACK	1

CATALOG NO.
7021
7198
7351
7416
8246
9980
3159

REV.	DATE	DESCRIPTION	ECO No.	BY
G8	04-05-19	CHANGED SCREW 1000056 TO 1000183 FOR ALUM. VERSIONS	041263	AL
G9	08/03/20	1000193 WAS 1000183, REM R9980-RL-TG-KK-AEP: #1143686 FROM FACTORY NOTE 1	046011	AJH
G10	9/15/21	UPDATE CONSUMER STOCK # ON PAGE 3	049020	SKO

Material:	16 GA STEEL OR .064 ALUM.	 <p><b>MILBANK</b> ENERGY AT WORK</p> <p>KANSAS CITY, MO USA</p>		
Shear/Die No.:				
Finish:	MILBANK LIGHT GRAY			
Part Wt.:	10.050 LBS. EA.			
Square Inches:		Title:	200A 4 OR 5 TERM RL OH METER SOCKET	
Tolerances:	Unless Specified Otherwise X.X ±.1 X.XX ±.03 X.XXX ±.015 X" ±2"	Third Angle	Catalog No.:	(SEE CHART)
Scale:	NTS	Checked By:	Customer:	
Drawn By:	DL	Approved By:	Drawing No.:	7021
			Date:	05/23/17
			Sheet:	1 of 3

PREFIX	SUFFIX	SHELL #	TOP #	BACK #	BOTTOM #
S, R, OR U	-()	1000291	1000207	1000213	1000233
S, R, OR U	-(-)-BCEC	1151173	1000207	1151172	1000233
S, R, OR U	-(-)-PEC	1165685	1000207	1165684	1000233
AP, RAP, OR UAP	-()	1005035	1004938	1005031	1005063
UA	-()	1207971	1004938	1005031	1005063

CATALOG NO.	LABEL #1135425 QTY.
ALL OTHERS	0
U7021-RL-TG-DTE	1

ITEM	QTY.	PART NUMBER	DESCRIPTION
101	1	(SEE CHART)	TOP
102	1	(SEE CHART)	BOTTOM
103	1	1000213	BACK

SUFFIX	SMALL HUB TYPE	HUB / SCREWS
-RL	HUB OPENING	NONE
-XL	CLOSING PLATE (A7551)	1028222
-WL	1" (A7514)	1028195 / 1156422 (4)
-YL	1 1/4" (A7515)	1000006 / 1156422 (4)
-ZL	1 1/2" (A7516)	1003422 / 1156422 (4)
-DL	2" (A7517)	1000007 / 1156422 (4)
-EL	2 1/2" (A7518)	1028196 / 1156422 (4)

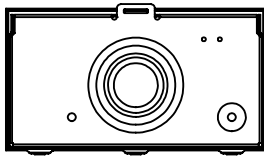
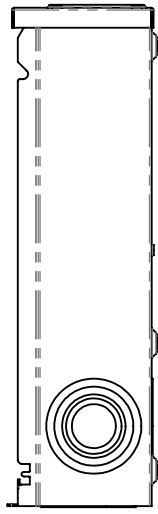
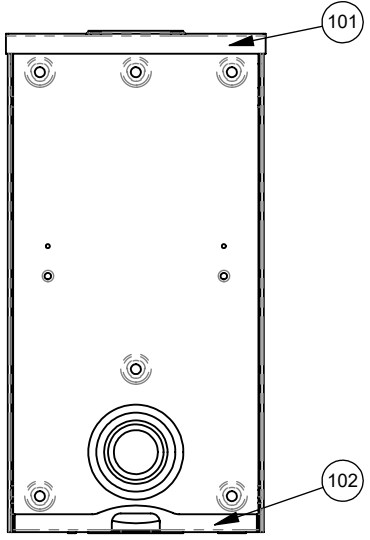
SUFFIX	LABEL #1128667 QTY.
NONE	0
-CPSB	1

SUFFIX	BRIDGE & BLOCK ASSY #
NONE	1107491
-TG	1107492
-KK	1107472
-QG	1107478
-OS	1107479
-TG-OS	1107480
-KK-OS	1107481
-TG-KK	1107483
-QG-KK	1107484
-5T	1116148
-TG-5T	1107485
-E	1006281
-E-TG	1028306


SUFFIX	FRONT ASSY #
NONE (STEEL)	1094928
NONE (ALUM.)	1117829
NONE (ALUM. UNPAINTED)	1207973
-PL	1118578
-SP	1118033
-RGE	1118578

THE FOLLOWING FRONTS ARE ON DWG. #1117297

-CPSB	1128676
-DEC	1118027
-RUEMC	1117437
-SEC	1117436
-TREC	1117435
-CE	1097838
-CEC	1117297
-ICE	1125062
-BCEC	1151176
-NGE	1157476
-PEC	1165688
-CNFL	1184736




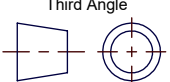
SEE DRAWING 1167313 FOR MILBANK WELDING GUIDELINES.

Material:	16 GA. STEEL / .064 ALUM		 <p>KANSAS CITY, MO USA</p>
Shear/Die No.:	~		
Finish:	~		Title: SHELL WELDMENT
Part Wt.:	5.543	LBS. EA.	
Square Inches:	~		Catalog No.: ~
Tolerances:	Unless Specified Otherwise X.X ±.1 X.XX ±.03 X.XXX ±.015 X" ±2"		
Scale:	NTS	Checked By:	Customer: ~
Drawn By:	DL	Approved By:	
Date:	05/23/17	Sheet:	2 of 3

REV.	DATE	DESCRIPTION	ECO No.	BY
G8	04-05-19	CHANGED SCREW 1000056 TO 1000183 FOR ALUM. VERSIONS	041263	AL
G9	08/03/20	1000193 WAS 1000183, REM R9980-RL-TG-KK-AEP: #1143686 FROM FACTORY NOTE 1	046011	AJH
G10	9/15/21	UPDATE CONSUMER STOCK # ON PAGE 3	049020	SKO

SUFFIX	CUSTOMER	DESCRIPTION
-AEP	AEP	SUFFIX WAS ADDED TO CATALOG NO. FOR SALES AND PRODUCTION. HAS NO SPECIAL REQUIREMENTS.
-AEPU		SAME AS AEP, ONLY UTILITY USE.
-APCO	ALABAMA PWR. CO.	1.) EACH SHIPPING CARTON SHALL DISPLAY IN BOLD NUMERALS THE APPROPRIATE NAMUFACTURERS CATALOG NO. AND APCO COMMODITY NUMBER 2782688. 2.) ALL SHIPMENTS SHALL BE BANDED ON PALLETS AS FOLLOWS: 48" LG. X 40" WIDE DOUBLE FACED, NON-REVERSIBLE, TWO-WAY ENTRY, HARDWOOD REUSABLE PALLET WITH THREE 48" RUNNERS, OVERALL PALLET LOAD HEIGHT NO TO EXCEED 48. 3.) FRONT TO HAVE -APCO SUFFIX.
-CE	CONSUMERS ENERGY	1.) CONSUMERS ENERGY STOCK NO. 10029607. 2.) CARTON LABEL REQUIRES CONSUMERS ENERGY STOCK NUMBER IN A CATALOG NUMBER POSITION AND CATALOG NUMBER IN SECOND DESCRIPTION POSITION. ENTER CUSTOMER BILLING NO. 062500 IN THE "FREIGHT LINE / NOTE" FIELD.
-CIN	CINN. GAS & ELEC. CO.	INSTALL LABEL #1105887 ONLY. IT WILL REPLACE LABEL #1000045.
-DLC	DUQUESNE LIGHT	1.) ALL CONNECTORS TO BE PLATED WITH ALNOX INHIBITOR INSTALLED. 2.) STAMP "S-200" ON BOTTOM OF SOCKET AND ON CARTON. 3.) INSTALL LABEL #1025240 (1). 4.) FOR FIELD MOUNTED INSULATED NEUTRAL ORDER CAT. K3077.
-DPL	DELMARVA POWER & LIGHT	1.) ALL CONNECTORS TO BE PLATED WITH ALNOX INHIBITOR INSTALLED. 2.) INSTALLED LABEL #1000066 (1).
E	CONSIGNED STOCK	SUPPLY EXT. HEX NUT ASSY. #1001340 (6) IN PLACE OF INT. HEX NUT ASSY ON BLK & BRIDGE ASSY
-FPL	FLORIDA AREA	(HUGHES SUPPLY, SIMES- SUTTON.) 1.) STAMP CAT. NO. ON INSIDE & OUTSIDE OF METER SOCKET 2.) U/L LABEL #1000166 TO BE PLACED INSIDE METER SOCKET.
-HS	C.P.&L.	SUPPLY WITH STAINLESS STEEL UB SCREW #1005200 (4)
-IES	CONSIGNED STOCK	ADDED TO CATALOG NUMBER TO DESIGNATE DEDICATED STOCK ONLY.
-MER	MERALCO	STAMP IN INDELIBLE INK ON THE FRONT COVER AND SIDE OF SHELL THE WORK "MERALCO" WITH 1/4" HIGH LETTERS.
-OUC	O.U.C.	STAMP INSIDE OF BACK WITH INDELIBLE INK, 3/4" TALL LETTERS "OUC" (LOC. D) PALLET TO BE NO LARGER THAN 40".
-SSH	AEP-WEST	1.) #1000183 BECOMES #1000057. 2.) 3 WELDS EACH SIDE, 5 WELDS ACROSS BACK - NO EXCEPTION.
-RGE	ROCHESTER GAS & ELECTRIC	1.) REPLACE CAT. NO. STAMP W/ LABEL #1000333, AT (LOC. A) 2.) TO BE SUPPLIED WITH FRONT ITEM #10 #1118578.
-N1	NORTHWEST FLA.	SPECIAL LABELING SUPPLY U/L RATING LABEL ONLY #1000072 (1) (LOC. B).
-ICE	I.C.E. COSTA RICA	INK STAMP "ICE 2006" INSIDE SHELL. "200 A" (600 VAC) MUST BE INK STAMPED ON THE SIDE OF THE SHELL. SEE DETAIL DWG. #1125375.

REV.	DATE	DESCRIPTION	ECO No.	BY
G8	04-05-19	CHANGED SCREW 1000056 TO 1000183 FOR ALUM. VERSIONS	041263	AL
G9	08/03/20	1000193 WAS 1000183, REM R9980-RL-TG-KK-AEP: #1143686 FROM FACTORY NOTE 1	046011	AJH
G10	9/15/21	UPDATE CONSUMER STOCK # ON PAGE 3	049020	SKO

Material:		 <p><b>MILBANK</b> ENERGY AT WORK KANSAS CITY, MO USA</p>
Shear/Die No.:		
Finish:		Title:
Part Wt.:	LBS. EA.	
Square Inches:		Catalog No.:
Tolerances: Unless Specified Otherwise X.X ±.1 X.XX ±.03 X.XXX ±.015 X" ±2"		Customer:
Third Angle 		Drawing No.:
Scale:	NTS	Date:
Checked By:		05/23/17
Approved By:		Sheet:
Drawn By:	DL	3 of 3